



FlexFit (Hybrid UL Type A + B) T8

12T8/COR/48-5CCT/FF18/G/DIM 25/1

CorePro, LEDtube, T8, 47-1/4 inch, 12, 3000 K, 3500 K, 4000 K, 5000 K, 6500 K, 1700 lm, 1700 lm, 1800 lm, 1800 lm, 1800 lm, 50000 hour(s)

Philips FlexFit (Hybrid UL Type A + B) lamps are designed with the customer in mind for installation flexibility. The FlexFit lamp can operate as both a plug and play (UL Type-A) and double-ended direct wire (UL Type-B). As with all Philips products, the FlexFit family of lamps are compatible with more ballasts than any manufacturer giving the customer peace of mind during installation. Additionally, the long life (50K hours) delivers reduced maintenance and replacement costs. If the ballast should fail, simply cut the ballast from the system and wire the tube directly to line voltage (120-277V)!

Product data

General Information		Operating and Electrical	
Cap-Base	G13	Correlated Color Temperature (Nom)	3000 3500 4000 5000 6500 K
Nominal lifetime	50,000 hour(s)	Luminous Efficacy (rated) (Nom)	144 lm/W
Switching Cycle	50,000	Color Consistency	<6
Lighting Technology	LEDtube	Color rendering index (CRI)	80
		LLMF At End Of Nominal Lifetime (Nom)	70 %
Light Technical		Operating and Electrical	
Color Code	3000K/3500K/4000K/5000K/6500K	Input Frequency	50 to 60 Hz
Beam Angle (Nom)	220 degree(s)	Power Consumption	12
Luminous Flux	1,700 1,700 1,800 1,800 1,800 lm	Lamp Current (Max)	115 mA
Color Designation	3000K/3500K/4000K/5000K/6500K	Lamp Current (Min)	50 mA

FlexFit (Hybrid UL Type A + B) T8

Wattage Equivalent	32 W
Starting Time (Nom)	0.5 s
Warm-up time to 60% light	0.5 s
Power Factor (Fraction)	0.9
Voltage (Nom)	120-277 V
UL Type	UL Type A+B

Temperature

T-Case Maximum (Nom)	131 °F
----------------------	--------

Controls and Dimming

Dimmable	Only with specific dimmers
----------	----------------------------

Mechanical and Housing

Bulb Finish	Frosted
Bulb Material	Glass
Product Length	47-1/4 inch
Bulb Shape	T8
Net Weight (Piece)	0.5 lb

Approval and Application

Energy Saving Product	Yes
-----------------------	-----

Approval Marks	RoHS compliance UL certificate DLC compliance
----------------	---

EU RoHS compliant	Yes
Ambient temperature range	-4 to +113 °F

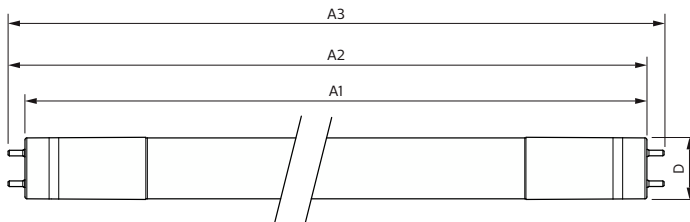
Application Conditions

can it be used in closed luminaires	Yes
-------------------------------------	-----

Product Data

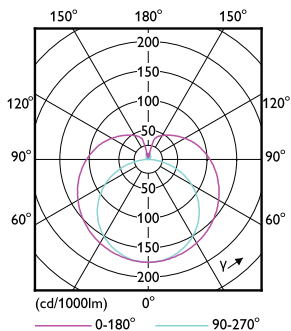
Order product name	12T8/COR/48-5CCT/FF18/G/DIM 25/1
Full product name	12T8/COR/48-5CCT/FF18/G/DIM 25/1
Order code	588640
Material Nr. (12NC)	929003794704
Numerator - Quantity Per Pack	1
EAN/UPC - Product/Case	046677588649
Numerator - Packs per outer box	25
EAN/UPC - Case	50046677588644

Dimensional drawing

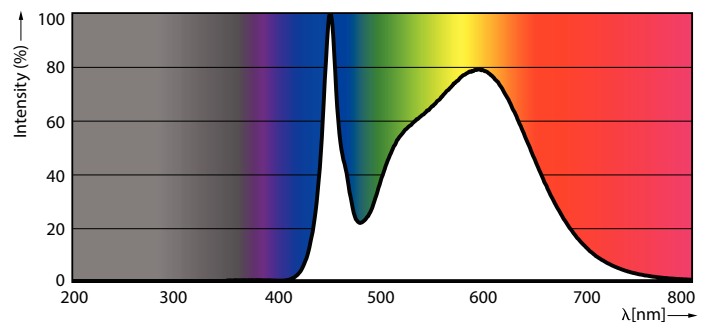


Product	D1	D2	A1	A2	A3
12T8/COR/48-5CCT/ FF18/G/DIM 25/1	1-1/16 inch	1-1/8 inch	47-3/16 inch	47-1/2 inch	47-3/4 inch

Photometric data



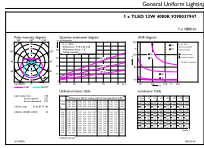
Light Distribution Diagram - 12T8/COR/48-5CCT/FF18/G/DIM 25/1



Spectral Power Distribution Colour - 12T8/COR/48-5CCT/FF18/G/DIM 25/1

FlexFit (Hybrid UL Type A + B) T8

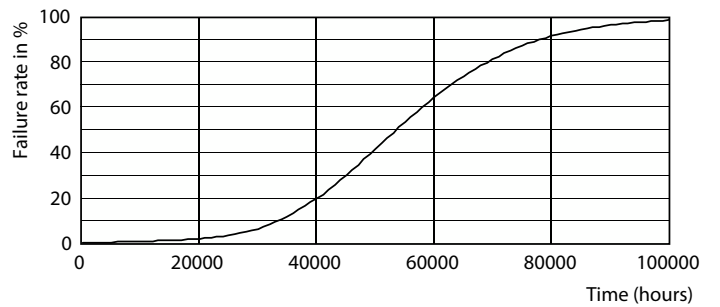
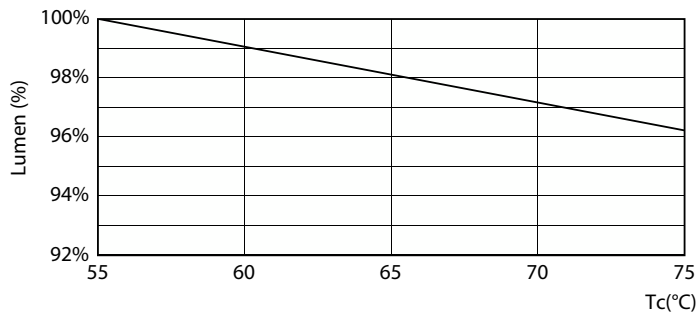
Photometric data



Technical Parameters 43 Page 10

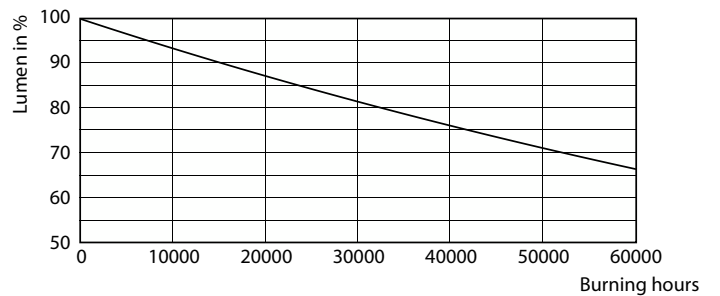
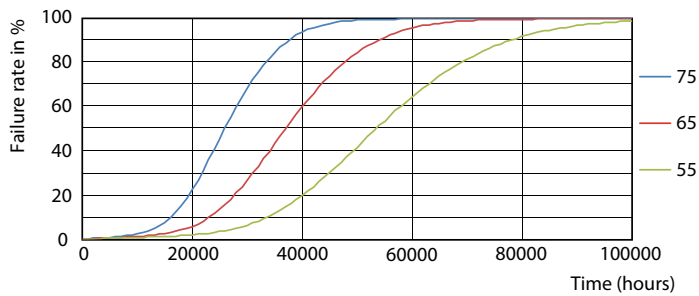
General uniform lighting - 12T8/COR/48-5CCT/FF18/G/DIM 25/1

Lifetime



Lumen Maintenance Diagram - 12T8/COR/48-5CCT/FF18/G/DIM 25/1

Life Expectancy Diagram

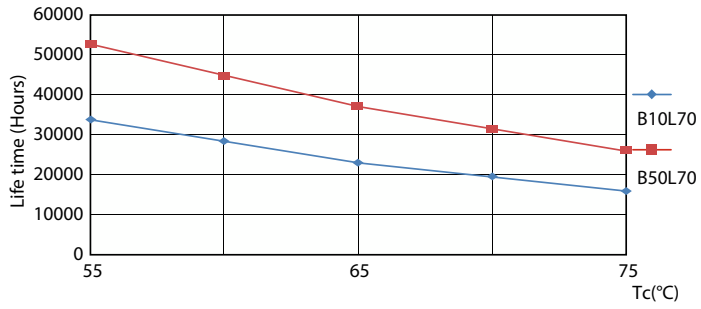


FailureRate

Lumen Maintenance Diagram - 12T8/COR/48-5CCT/FF18/G/DIM 25/1

FlexFit (Hybrid UL Type A + B) T8

Lifetime



LifetimeVsTc

