



InstantFit (UL Type A) Circline

16CIR/CNG/12-4CCT/IF17/P/G10q 6/1

CorePro, LED, C-T9, 9-3/8 inch, 16 W, Selectable, 3000 K, 4000 K, 5000 K, 6500 K, 1700 lm, 36000 hour(s)

Philips InstantFit LED Circline easily replace circline fluorescent tube operated on instant-start electronic ballasts, no rewiring needed. This plastic LED circline tube brings multiple selectable color temperature, long lifetime and energy efficiency.

Product data

General Information		Operating and Electrical	
Cap-Base	G10q	Input Frequency	50 to 80K Hz
Nominal lifetime	36,000 hour(s)	Power Consumption	16 W
Switching Cycle	50,000	Lamp Current (Max)	700 mA
Lighting Technology	LED	Lamp Current (Min)	150 mA
Light Technical		Wattage Equivalent	32 W
Color Code	3000/4000/5000/6500	Starting Time (Nom)	0.5 s
Beam Angle (Nom)	120 degree(s)	Warm-up time to 60% light	0.5 s
Luminous Flux	1,700 lm	Power Factor (Fraction)	0.2
Color Designation	3000/4000/5000/6500	Voltage (Nom)	120-277 V
Correlated Color Temperature (Nom)	Selectable 3000 4000 5000 6500 K	UL Type	UL Type A
Luminous Efficacy (rated) (Nom)	106 lm/W	Temperature	
Color Consistency	<6	T-Case Maximum (Nom)	131 °F
Color rendering index (CRI)	80	Controls and Dimming	
LLMF At End Of Nominal Lifetime (Nom)	70 %	Dimmable	No
All-in Type	All-in, Multi Color Temperature		

InstantFit (UL Type A) Circline

Mechanical and Housing

Bulb Finish	Frosted
Bulb Material	Plastic
Product Length	9-3/8 inch
Bulb Shape	C-T9
Net Weight (Piece)	0.452 lb

Approval and Application

Energy Saving Product	Yes
Approval Marks	RoHS compliance UL certificate
EU RoHS compliant	Yes
Ambient temperature range	-4 to +113 °F

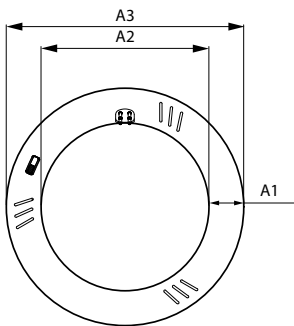
Application Conditions

can it be used in closed luminaires	Yes
-------------------------------------	-----

Product Data

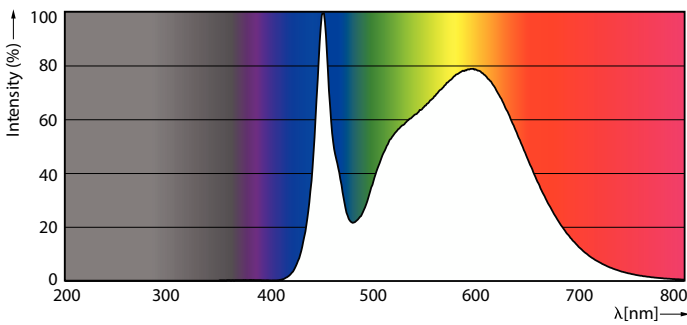
Order product name	16CIR/CNG/12-4CCT/IF17/P/G10q 6/1
Full product name	16CIR/CNG/12-4CCT/IF17/P/G10q 6/1
Order code	588103
Material Nr. (12NC)	929003740704
Numerator - Quantity Per Pack	1
EAN/UPC - Product/Case	046677588106
Numerator - Packs per outer box	6
EAN/UPC - Case	50046677588101

Dimensional drawing

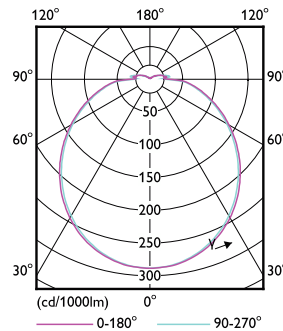


Product	A1	A2	A3
16CIR/CNG/12-4CCT/IF17/P/G10q 6/1	1-3/16 inch	9-3/8 inch	11-3/4 inch

Photometric data



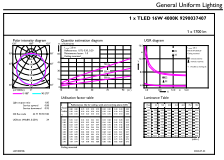
Spectral Power Distribution Colour - 16CIR/CNG/12-4CCT/IF17/P/G10q 6/1



Light Distribution Diagram - 16CIR/CNG/12-4CCT/IF17/P/G10q 6/1

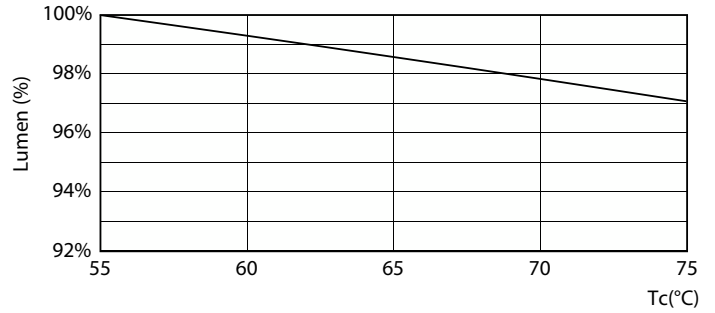
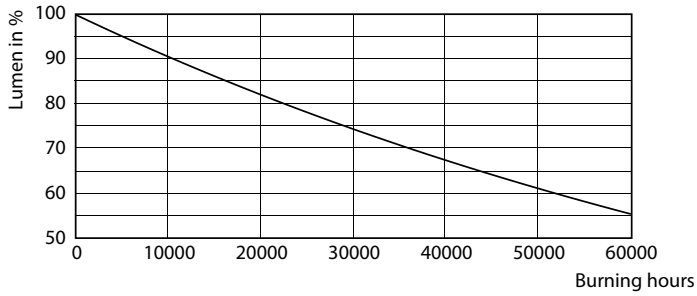
InstantFit (UL Type A) Circline

Photometric data

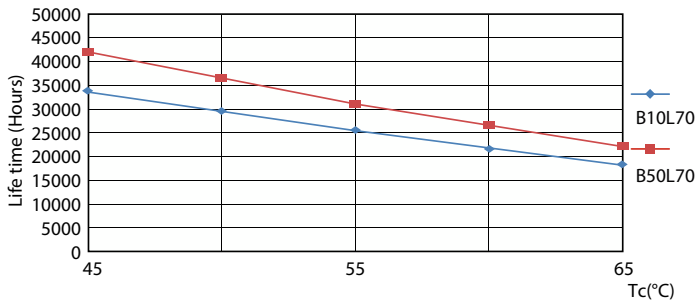


General uniform lighting - 16CIR/CNG/12-4CCT/IF17/P/G10q 6/1

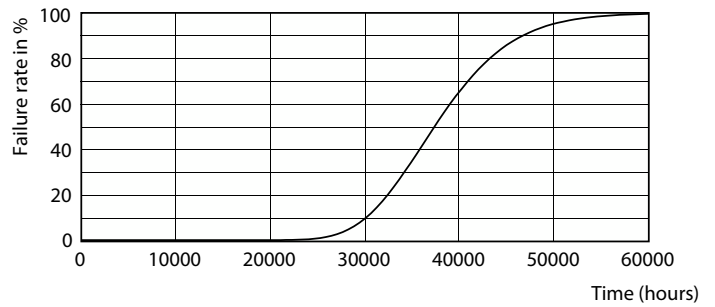
Lifetime



Lumen Maintenance Diagram - 16CIR/CNG/12-4CCT/IF17/P/G10q 6/1



Lumen Maintenance Diagram - 16CIR/CNG/12-4CCT/IF17/P/G10q 6/1

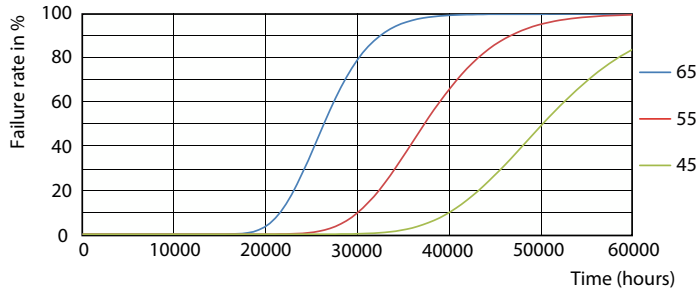


Life Expectancy Diagram

Life Expectancy Diagram

InstantFit (UL Type A) Circline

Lifetime



Life Expectancy Diagram

